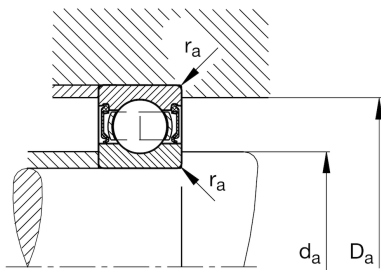
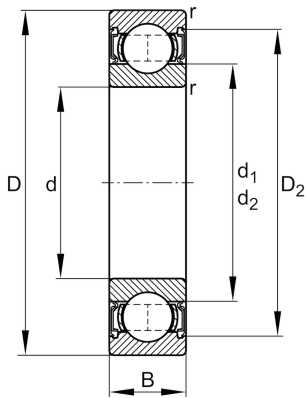
**FAG****61810-2RSR-Y**

Deep groove ball bearing

Schaeffler ID:
0788039690000Deep groove ball bearing 618..-2RSR-Y,
single row, seals, brass sheet metal cage

Technical information

**Dimensions**

r_{\min}	0.3 mm	Minimum chamfer dimension
D_2	61.8 mm	Caliber diameter outer ring
d_1	55.1 mm	Shoulder diameter inner ring
	0.052 kg	Weight

Main Dimensions & Performance Data

d	50 mm	Bore diameter
D	65 mm	Outside diameter
B	7 mm	Width
C_r	7,200 N	Basic dynamic load rating, radial
C_{0r}	6,300 N	Basic static load rating, radial
C_{ur}	440 N	Fatigue load limit, radial
n_G	4,850 1/min	Limiting speed

Mounting dimensions

$d_{a \min}$	52 mm	Minimum diameter shaft shoulder
$D_{a \max}$	63 mm	Maximum diameter of housing shoulder
$r_{a \max}$	0.3 mm	Maximum fillet radius

Calculation factors

f_0	16	Calculation factor
-------	----	--------------------

Temperature range

T_{\min}	-20 °C	Operating temperature min.
T_{\max}	110 °C	Operating temperature max.